

Natural Background Radiation

January 2013

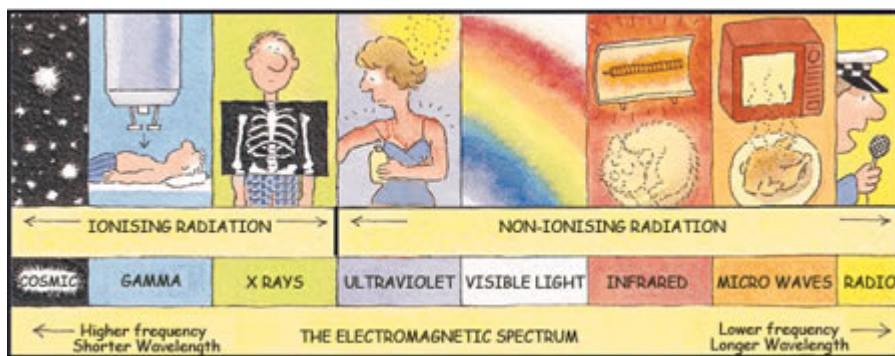
Radiation is energy in motion, in the form of waves or streams of particles. Radiation has always been present and is all around us in many forms.

When people hear the word radiation, they often think of atomic energy, nuclear power and radioactivity, but radiation has many different forms and comes from many other sources. Sound and visible light are familiar forms of radiation; other types include ultraviolet radiation (that produces a suntan), infrared radiation (a form of heat energy), and radio and television signals. These are examples of non-ionizing radiation.

Ionizing radiation has the ability to knock electrons out of orbit around atoms, upsetting the electron/proton balance and potentially damaging cells. Examples include alpha, beta, gamma and neutron radiation and x-rays.

Life has evolved in a world with significant levels of ionizing radiation, and our bodies have adapted to it.

The electromagnetic spectrum



© Reproduced by permission of World Nuclear Association, London, UK.

Fast Facts

- Radiation has always been present and is all around us in many natural forms. Life has evolved in a world with significant levels of ionizing radiation.
- Many radioisotopes are naturally occurring, and originated during the formation of the solar system and through the interaction of cosmic rays with molecules in the atmosphere. Tritium is an example of a radioisotope formed by this interaction.
- Radioisotopes such as polonium-210, carbon-14 and potassium-40 naturally occur within the human body.
- Potassium-40 is present in many common foods including red meats, white potatoes, carrots, bananas, lima beans and Brazil nuts.
- The annual average effective dose from natural background radiation is approximately 1.8 millisieverts (mSv) in Canada and 2.4 mSv worldwide.

Natural Radiation Sources

Background radiation is a constant source of ionizing radiation present in the environment and emitted from a variety of sources. According to the United Nations Scientific Committee on the Effects of Atomic Radiation (UNSCEAR), there are four major sources of natural radiation: cosmic radiation, terrestrial radiation, and intakes of naturally-occurring radionuclides through inhalation and ingestion.

Cosmic radiation

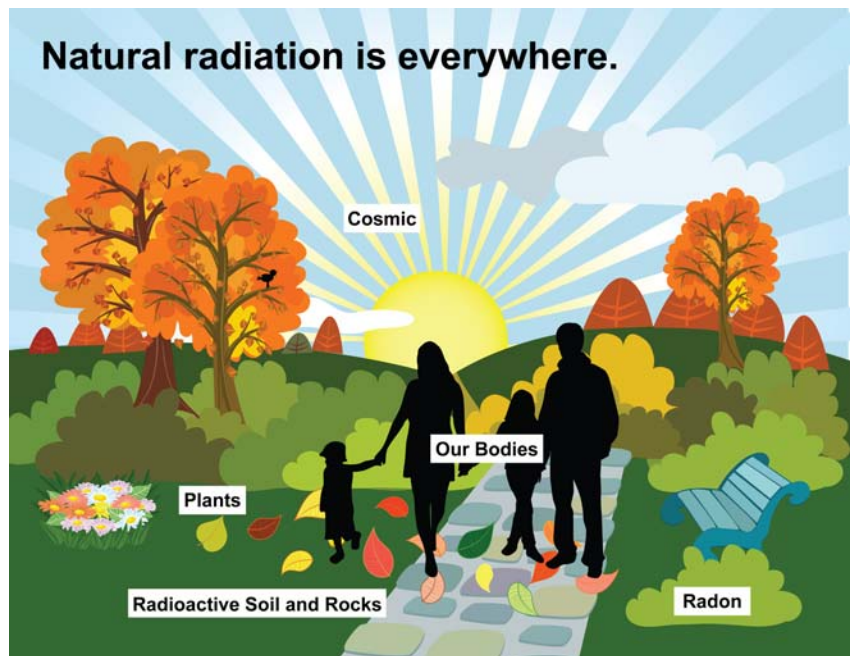
The earth's outer atmosphere is continually bombarded by cosmic radiation. Usually it originates from a variety of sources, including the sun and other celestial events in the universe. Some ionizing radiation will penetrate the earth's atmosphere and become absorbed by humans which results in natural radiation exposure.

Terrestrial radiation

The composition of the earth's crust is a major source of natural radiation. The main contributors are natural deposits of uranium, potassium and thorium which, in the process of natural decay, will release small amounts of ionizing radiation. Uranium and thorium are found essentially everywhere. Traces of these minerals are also found in building materials so exposure to natural radiation can occur from indoors as well as outdoors.

Inhalation

Most of the variation in exposure to natural radiation results from inhalation of radioactive gases that are produced by radioactive minerals found in soil and bedrock. Radon is an odourless and colourless radioactive gas that is produced by the decay of uranium. Thoron is a radioactive gas produced by the decay of thorium. Radon and thoron levels vary considerably by location depending on the composition of soil and bedrock.



Once released into the air, these gases will normally dilute to harmless levels in the atmosphere but sometimes they become trapped and accumulate inside buildings and are inhaled by occupants. Radon gas poses a health risk not only to uranium miners, but also to homeowners if it is left to collect in the home. On average, it is the largest source of natural radiation exposure.

Natural Background Radiation

Ingestion

Trace amounts of radioactive minerals are naturally found in the contents of food and drinking water. For instance, vegetables are typically cultivated in soil and ground water which contains radioactive minerals. Once ingested, these minerals result in internal exposure to natural radiation.

Some of the essential elements that make up the human body, mainly potassium and carbon, have radioactive isotopes that add significantly to our background radiation dose.

Natural Radiation Doses

“Dose” is a general term that refers to the amount of energy absorbed by tissue from ionizing radiation. The dose is measured in sieverts (Sv) and is more commonly expressed in units of either millisieverts (mSv)—which represents a thousandth of a sievert— or microsieverts (μ Sv) — one millionth of a sievert.

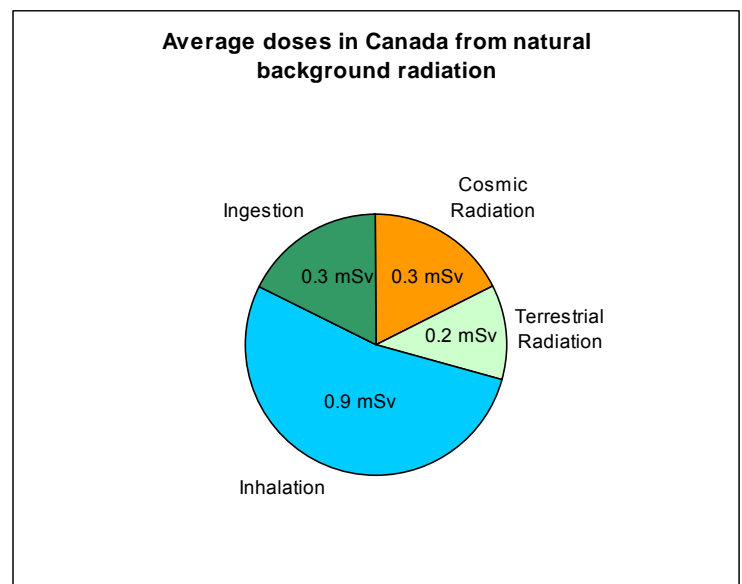
The total worldwide average effective dose from natural radiation is approximately 2.4 mSv per year; in Canada, it is 1.8 mSv. In some parts of the world, it is naturally much higher – for instance on the Kerala Coast in India, the annual effective dose is 12.5 mSv. The dose varies with the source of the radiation. For example, in northern Iran, geological characteristics result in a dose that can reach 260 mSv a year.

Cosmic radiation

Regions at higher altitudes receive more cosmic radiation. According to a recent study by Health Canada, the annual effective dose of radiation from cosmic rays in Vancouver, British Columbia, which is at sea level, is about 0.30 mSv. This compares to the top of Mount Lorne, Yukon, where at 2,000 m, a person would receive a dose of about 0.84 mSv annually. Flying in an airplane increases exposure to cosmic radiation, resulting in a further average dose of 0.01 mSv per Canadian per year.

Terrestrial radiation

There are also natural sources of radiation in the ground, and some regions receive more terrestrial radiation from soils that contain greater quantities of uranium. The average effective dose from the radiation emitted from the soil (and the construction materials that come from the ground) is approximately 0.5 mSv per year. However, this dose varies depending on location and geology, with doses reaching as high as 260 mSv in Northern Iran or 90 mSv in Nigeria. In Canada, the estimated highest annual dose is approximately 2.3 mSv, as measured in the Northwest Territories.



Natural Background Radiation

Inhalation

The earth's crust produces radon gas, which is present in the air we breathe. Radon has four decay products that will irradiate the lungs if inhaled. The worldwide average annual effective dose of radon radiation is approximately 1.3 mSv. A recent Health Canada survey on radon in homes reported that the radon levels in 93% of Canadian homes are below the current Canadian guideline of 200 Bq/m³.

Ingestion

Natural radiation from many sources penetrates our bodies through the food we eat, the air we breathe and the water we drink. Potassium-40 is the main source of internal irradiation (aside from radon decay). The average effective dose from these sources is approximately 0.3 mSv a year.

The table below displays the average effective dose in Canadian cities compared to worldwide average

Sources and Average Effective Dose from Natural Background Radiation in Selected Canadian Cities

Canadian City	Total (mSv/y)	Cosmic radiation (mSv/y)	Terrestrial background (mSv/y)	Annual inhalation dose (mSv/y)	Radionuclides in the body (mSv/y)
Worldwide	2.4	0.4	0.5	1.3	0.3
CANADA	1.8	0.3	0.2	0.9	0.3
Whitehorse	1.9	0.5	0.2	0.9	0.3
Yellowknife	3.1	0.4	1.4	0.9	0.3
Victoria	1.8	0.5	0.1	0.9	0.3
Vancouver	1.3	0.5	0.1	0.4	0.3
Edmonton	2.4	0.5	0.3	1.3	0.3
Regina	3.5	0.4	0.3	2.4	0.3
Winnipeg	4.1	0.4	0.2	3.2	0.3
Toronto	1.6	0.4	0.2	0.8	0.3
Ottawa	1.8	0.4	0.2	0.9	0.3
Iqaluit	1.9	0.5	0.2	0.9	0.3
Québec City	1.6	0.4	0.2	0.7	0.3
Montreal	1.6	0.4	0.3	0.7	0.3
Fredericton	1.8	0.3	0.3	0.9	0.3
Halifax	2.5	0.3	0.3	1.5	0.3
Charlottetown	1.8	0.3	0.2	0.9	0.3
St-John's	1.6	0.4	0.2	0.7	0.3

For more information:

1-800-668-5284 (in Canada)
613-995-5894 (outside Canada)
info@cnsccsn.gc.ca

nuclearsafety.gc.ca